

PRELIMINARY DATASHEET



Features :

- Single row, 4 digit , Liquid Crystal Display with Backlight
- 1 CT sensing, intelligent switching sequence
- ALM for over current & over temperature
- Up to 8 Stages

Display specifications

| | |
|--------|---------------------------------------|
| Type | Liquid crystal display with backlight |
| Digits | 4 digit to show electrical parameter |

Input specifications

| | |
|---------------------------|--|
| Rated input voltage | 50 to 520V AC |
| Rated input current range | Nominal 5A AC (Min 50mA , Max 6A) 1 CT Sensing |
| Frequency | 45 - 65 Hz |
| Wiring Input | 2P2W |
| Power Consumption | 7VA Max |
| Controlling range | Target PF : -0.800 to +0.800 |
| Switching Program | Automatic |
| Max Number of Steps | 1 to 8 |
| Resolution | Voltage : 1V Current : 0.1V |
| POWER CONSUMPTION | 15VA Max |

Output specifications

| | |
|-----------------------|------------|
| Mounting | Panel Type |
| Dimension | 96 x 96mm |
| Housing Material Type | Local PC |

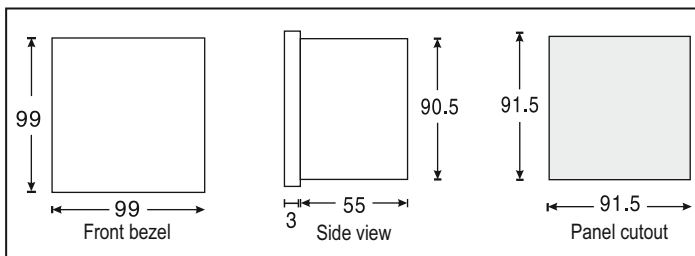
Environmental specifications

| | |
|-------------|---|
| Temperature | Operating : 0°C to 60°C ; Storage : - 20°C to 60°C ; Humidity: 0% to 95% without moisture consideration |
|-------------|---|

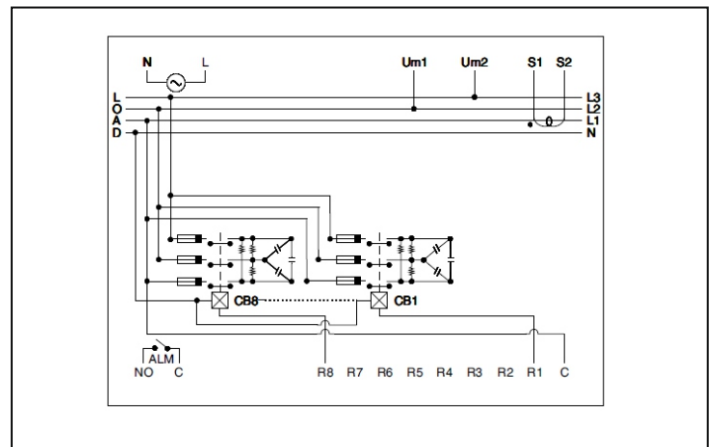
Mechanical specifications

| | |
|----------|-------------|
| Mounting | Panel mount |
| Weight | 263 gms |

Dimensions (in mm)



Terminal Connection



Compliance

Applicable EMI / EMC standards

Product standard : IEC 60947-1

| Category | | Standards compliance |
|--------------------------------|----------------|---|
| ESD immunity | IEC 61000-4-2 | Level III (Air Discharge , 8 kV) ; Level II (Contact Discharge , 4kV) |
| Surge immunity | IEC 61000-4-5 | 2kV Common Mode (Line to ground) ; 1kV differential mode (Line to line) |
| Radiated susceptibility | IEC 61000-4-6 | Level III(150kHz to 80MHz) (10V/m) |
| Voltage dips and interruptions | IEC 61000-4-11 | Dips : 0% during 0.5 cycle (Criteria B) ; 0% during 1 cycle (Criteria B) ; 40% during 10 cycle (Criteria B) ; 70% during 25 cycle (Criteria B) ; 80% during 250 cycle (Criteria B) Interruptions : 0% during 250/300 cycles (Criteria C) |
| Conducted Emission | CISPR 11 | Group 1, Class A (150 kHz to 30 MHz) |
| Radiated Emission | CISPR-11 | Group 1, Class A (30 MHz to 1 GHz) |
| Electrical Fat Transien | IEC 61000-4-4 | Level III ; 2kV |
| Power Frequency Magnetic Field | IEC 610004-8 | Continuous Field Level IV ; 30A/m ; Short Duration level IV : 300 A/m |

Ordering information

| Product code | Supply voltage | No. of stages | Certification |
|---------------------|-------------------------|---------------|---------------|
| APFC346-108-230V-CE | 85 - 270V AC, 50 - 60Hz | 8 | CE |