



**EC Declaration of Conformity**

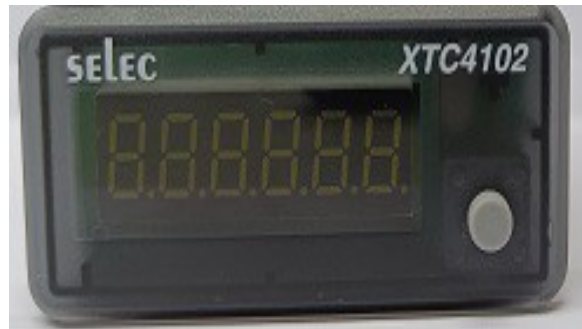
Selec Controls Pvt. Ltd.  
EL-27/1, Electronic zone, TTC Industrial Area,  
Mahape, Navi Mumbai, India-400710.

Unique identification of the product

Declare that the DOC is issued under our sole responsibility and belong to the following product

Product Descriptions	TIMER + COUNTER
Type	PANEL MOUNT
Batch	17/06/2022
Model No.	XTC4102-CE
Serial No.	2201T08-001

Object of the declaration (identification of apparatus allowing trace-ability; it may include a color image of sufficient clarity where necessary for the identification of the apparatus)



The object of the declaration described above is in conformity with the relevant union harmonization legislation

Electromagnetic Compatibility Directive (EMC), 2014/30/EU
Low Voltage Directive (LVD), 2014/35/EU
RoHS Directive,(EU)2015/863

The following harmonized standards and technical specifications have been applied

Title	Date of standard / Specification
IEC 61326-1	Edition 4.0-2017-08
IEC 61010-1	Edition 3.0 2010-06

**Signed for and on behalf of:**

**Selec Controls Pvt Ltd,  
Navi Mumbai  
17/06/2022  
Place and date of issue**

**Mrs. Raksha M (H.O.D-Design)**

**Authorized Signatory**

Selec/CE/2022/Dept/Version/1.1



**RoHS Declaration of Conformity**

Selec Controls Pvt. Ltd.  
EL-27/1, Electronic zone, TTC Industrial Area,  
Mahape, Navi Mumbai, India-400710.

Declare under sole responsibility that the following described products

Product Name	XTC4102-CE
Model Type	TIMER + COUNTER

was affixed with RoHS marked in the year

To which this declaration relates is in compliance with Directive **(EU) 2015/863** of the European Parliament and of the council of 22 July 2019 on the restriction of the use of certain hazardous substances in electrical and electronic equipment (RoHS Directive) in accordance with the definitions set forth in the directives.

RoHS Restricted Substances	Maximum Control Value
Lead	0.10% by weight (1,000 ppm) <sup>2</sup>
Mercury	0.10% by weight (1,000 ppm)
Cadmium	0.01% by weight (100 ppm)
Hexavalent Chromium	0.10% by weight (1,000 ppm)
Polybrominated Biphenyls (PBB)	0.10% by weight (1,000 ppm)
Polybrominated diphenylethers (PBDEs) including Deca-BDE or pentaBDE or octaBDE	0.10% by weight (1,000 ppm)
Bis(2-Ethylhexyl) phthalate (DEHP)	0.10% by weight (1,000 ppm)
Benzyl butyl phthalate (BBP)	0.10% by weight (1,000 ppm)
Dibutyl phthalate (DBP)	0.10% by weight (1,000 ppm)
Diisobutyl phthalate (DIBP)	0.10% by weight (1,000 ppm)

The Technical data file is maintained at Selec Controls Pvt. Ltd., Navi Mumbai, India.

**Selec Controls Pvt Ltd, Navi Mumbai, India**

**Mrs. Raksha M. (H.O.D-Design)**

\_\_\_\_\_  
(Place of Issue)

\_\_\_\_\_  
( Name & Designation of The Authorised Person)

**17/06/2022**

\_\_\_\_\_  
(Date of issue)

\_\_\_\_\_  
(Signature of The Authorised Person)