

Preliminary Datasheet



48 x 48mm

**Features :**

- 10 Functions
- 25 Time Ranges
- Universal Supply Voltage
- Knobs for mode setting, Time range, Time scale & division
- LED Indications : Power ON, Relay ON

Certifications :

**Display Specifications**

LED Indications	Power ON, Relay ON
-----------------	--------------------

**Input Specifications**

Accuracy Setting	±5% of F.S. or 50msec (Whichever is greater)
Repeat	±0.5% or 50msec (Whichever is greater)

**Output Specifications**

Relay contact	2 X 1 C/O SPDT
Contact rating	6A @ 250 AC / 24V DC, resistive

**Functional Specification**

Modes	On Delay, Pulse Output with instantaneous limit, ON Delay with Instantaneous limit, Interval with Instantaneous limit, Cyclic Equal OFF First, Cyclic Equal OFF First with Instantaneous limit, Cyclic Equal ON First, Cyclic Equal ON First with Instantaneous limit, Star delta with 50ms pause time, Star delta with 100ms pause time
Resolution	0.05sec
Reset	On power interruption, Reset time < 100msec

**Time Specification**

Time range	Time unit	Time setting range
0.5	S	0.05 to 0.5 sec
1		0.1 to 1 sec
3		0.3 to 3 sec
5		0.5 to 5 sec
10	M	1 to 10 sec
0.5		0.05 to 0.5 min
1		0.1 to 1 min
3		0.3 to 3 min
5	H	0.5 to 5 min
10		1 to 10 min
0.5		0.05 to 0.5 hour
1		0.1 to 1 hour
3	10H	0.3 to 3 hour
5		0.5 to 5hour
10		1 to 10 hour
0.5		0.5 to 5 hour
1	30H	1 to 10 hour
3		3 to 30 hour
5		5 to 50 hour
10		10 to 100 hour
0.5		1.5 to 15 hour
1		3 to 30 hour
3		9 to 90 hour
5		15 to 150 hour
10		30 to 300 hour

Note : Time range x Time unit = Maximum time setting range

**Auxiliary Supply Specifications**

Supply voltage	20-240V AC / DC (50 / 60Hz)
Power consumption	5VA max

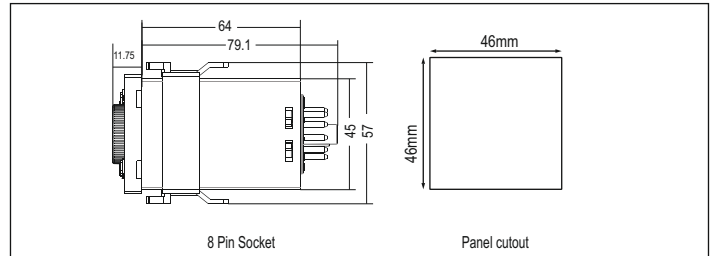
**Environmental Specification**

Temperature	Operating : 0 to 50°C (32 to 122oF) Storage : -20 to 75°C (-4 to 167oF)
Humidity (non - condensing)	95% RH

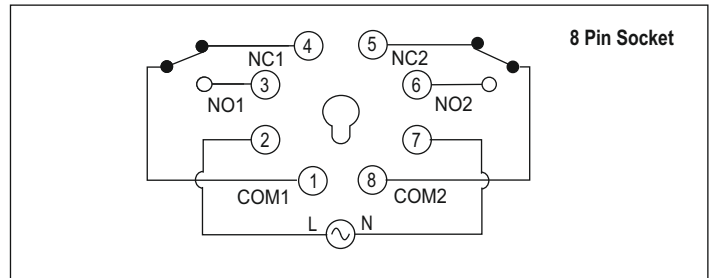
**Mechanical Specifications**

Mounting	Plug mount
Weight	100gms

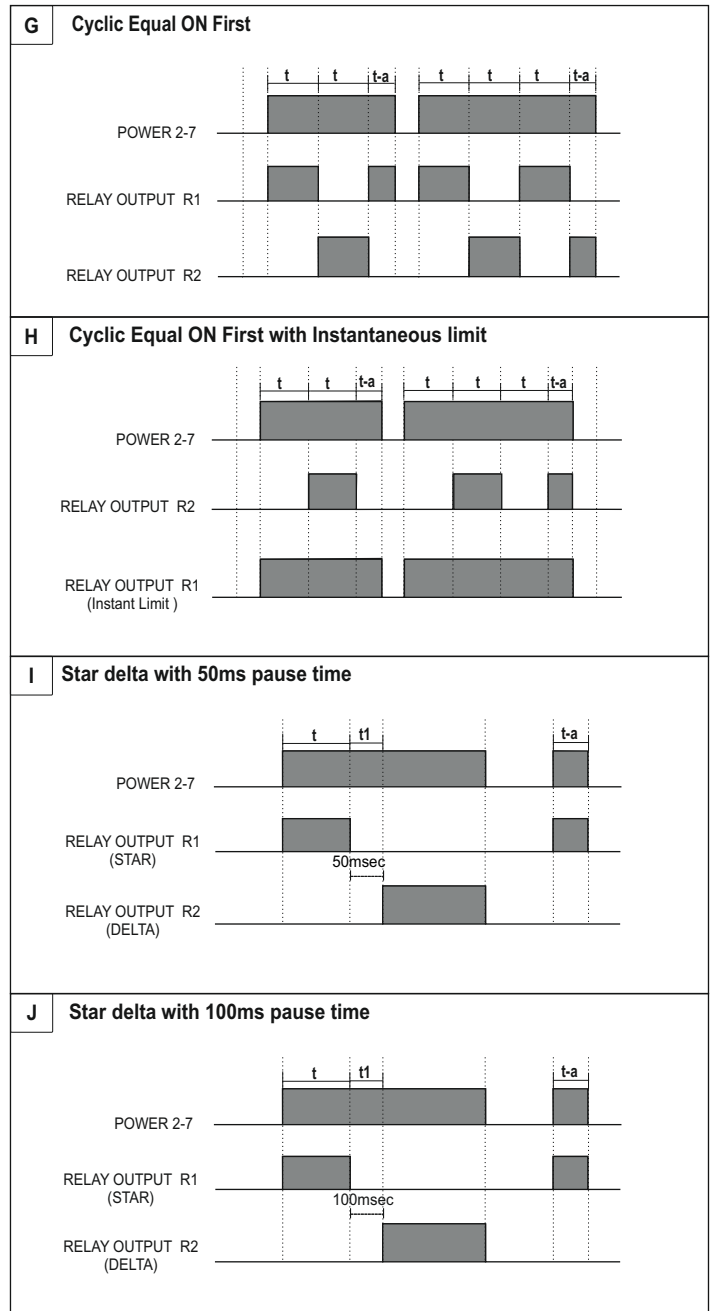
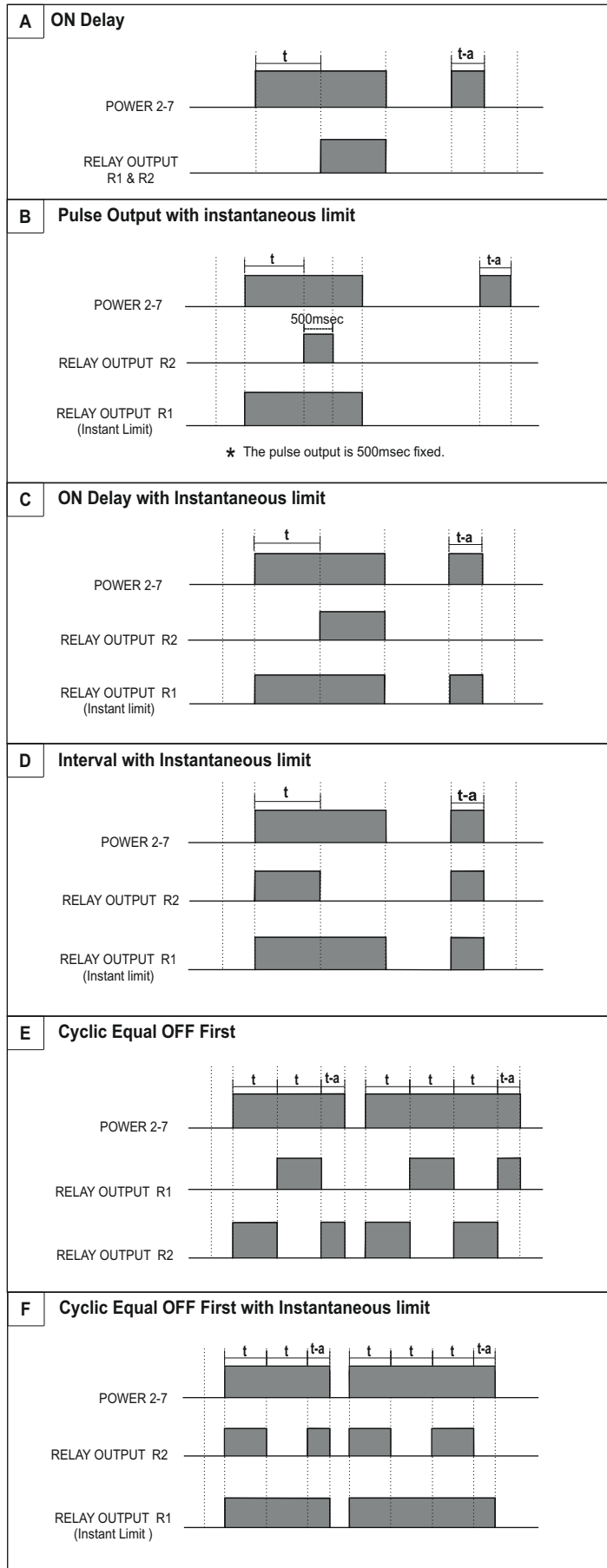
**Dimensions (All are in mm)**



**Terminal connections**



Timing Diagram



Ordering Information

Product Code	Supply Voltage	Certification
55MF-P8	20-240V AC / DC, 50/60Hz	CE