



Features :

- Compact PLC with built in HMI
- 2 line 8 character LCD
- Real Time Clock
- Windows based user friendly software for ladder programming & HMI configuration
- RS485 based communication with MODBUS protocol

Size : 70 x 90 x 66.4mm

Technical Specifications

Display

Display	2 line X 8 characters LCD (Green backlight)
No. of keys	5 keys (4 - User configurable)

Input Specifications

Digital Input	
Digital inputs	8
Input Type	PNP
Input Voltage Range	5 - 30V DC
Response Time	Typical 2 mSec (Based on ladder scan time) & 100 µSec for Fast Input
Isolation	No
Debounce Time	0 to 255 mSec (Default 10 mSec)
Timer Accuracy	0.1% or 2 mSec (Whichever is greater)
Fast Input	
No. of Channels	1
Frequency	5 kHz.

Output Specifications

Digital Output - Relay	
Digital Outputs	5 (NO type with 2 COM points)
Contact rating	5A @ 240V AC (Resistive) 5A @ 28V DC (Resistive)
Isolation	NO
Response Time	10 mSec
Mechanical Life	2000000 cycles

Communication

Communication Port	RS485 [Slave] RS485 [Master]
Communication Protocol	MODBUS RTU
Connector	RJ25

Functional Specifications

Programming Method	Windows based software for ladder programming and HMI configuration.
Memory	Data memory : 16 kB Code memory : 112 kB EEPROM Memory : 1 kB
Max. no. of Objects	2000 (As per memory)
Minimum Scan Time	200 µSec
Typical Scan Time	2 mSec (Based on ladder scan time)

Environmental Specifications

Operating Temperature	0 to 55 °C
Storage Temperature	-20 to 70 °C
Humidity (Non Condensing)	10% to 95% RH

Mechanical Specifications

Mounting	DIN Rail Mount
Weight	Approx 240 gms.

Functional Features

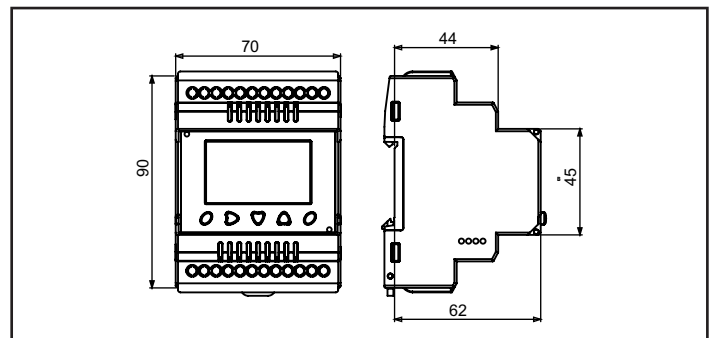
Timer Operational Modes	On Delay, Off Delay, Pulse, Special [Up/Down] Timer
Timer Resolution	1 mSec (Accurate only for 1 mSec Timer block)
Counter	Up Counter, Down Counter, Up/Down Counter, Special [Up/Down] Counter
Other Blocks	Analog input, FTC, PID, Ramp Soak
Memory Retention	10 years
RTC	No
Clock Data Retention	NA
Clock Drift	NA

Supply Specification

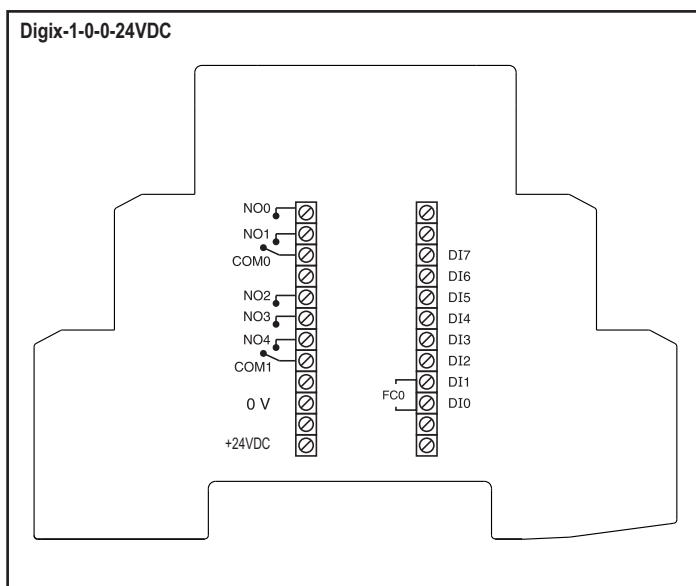
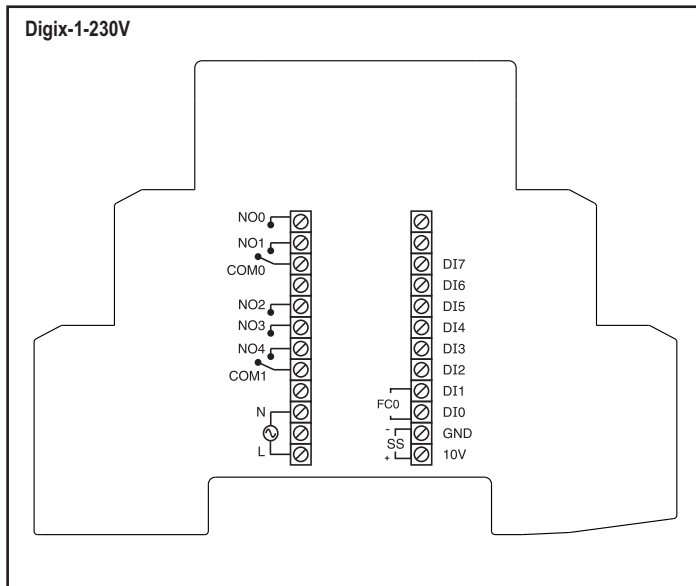
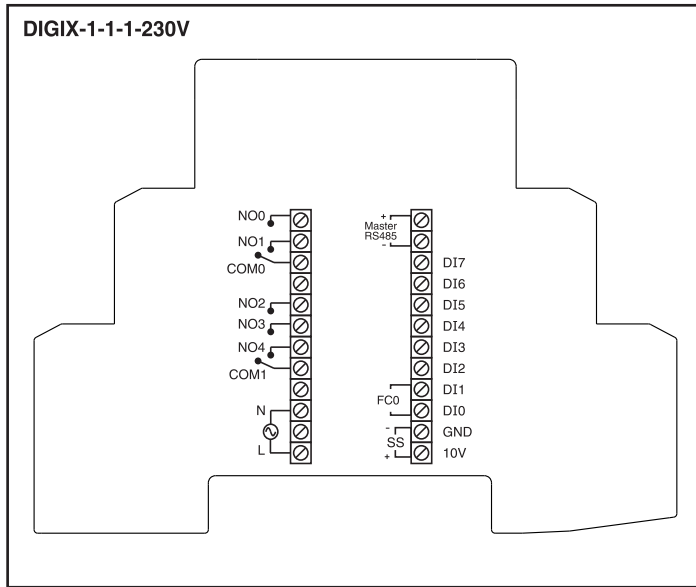
Supply Voltage	90 to 270V AC 50/60 Hz., 18 to 30V DC
Power Consumption	6W Max
Sensor Supply (SS)	10V, 50mA in AC model only

VAR IN_OUT & VAR OUTPUT types Variables Maximum Retention 25 variables only each of 32 bit @ 110V

Dimensions (All dimensions are in mm)



Terminal Connections



Ordering Information

Order Code	Description
DIGIX-1-1-1-230V	8 Inputs, 8 Outputs, RS485 Master, RTC, 230V AC Supply
DIGIX-1-230V	8 Inputs, 8 Outputs, 230V AC Supply
DIGIX-1-0-0-24VDC	8 Inputs, 8 Outputs, 24V DC Supply

Accessories (to be ordered separately)

Downloading Cable	AC-USB-RS485-03
Networking	ACH-004 (RJ25 Cable)
	AC-IOEXP-03 (Expansion Adaptor)
	AC-USB-RS485-02 (USB to RS485 Cable)