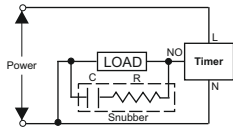


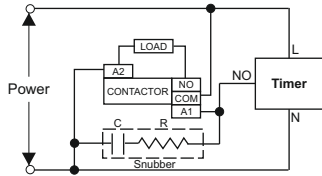


### ⚠ Caution:

- While connecting START, INHIBIT, RESET please make sure to use terminal 2 as a common terminal (as shown in connection diagram). Using terminal 10 as a common terminal, may result in inappropriate operation.
- Please check polarity of DC power input before connecting.
- Load connection :**
  - For load current less than 0.5A.



- For bigger loads, use interposing relay/contactors .



Snubber Part No.: APRC-01.

Note : Use snubber as shown above to increase the life of internal relay

- Change the settings of modes, time range, time scale or division knobs only when the unit is powered off.
- Fuse protection : The equipment does not have any built-in fuse. Fuse rating of 275VAC/1A is recommended.

### EMC Installation Guidelines:

- Use proper input power cables with shortest connections and twisted type.
- Layout of connecting cables must be away from any internal EMF source

### Mechanical Installation Guidelines:

- The equipment uses 11-Pin Relay Socket with a clamp for T-type Din-Rail.
- Ensure unit is correctly fitted on to the 11-Pin Socket.
- Slide the equipment using appropriate tools and holding the unit from the front side, slide it over the fixed rail.

- Malfunction may occur if above instructions are not followed

### SPECIFICATIONS

Time Setting Range : 0.05sec - 300hour  
Supply Voltage : 20-240VAC / DC,  
50/60Hz

Power Consumption : Max 5VA  
Input Power Rating : 20-240V AC/DC,  
(Start, Inhibit, Reset) 50/60Hz  
Min input signal time : 50ms  
(Start, Inhibit, Reset)

Reset time : 100ms  
Contact type : 2 SPDT (1C/O)  
Contact capacity : 250VAC,  
6A resistive load

Electrical life of relay : 100,000 operations  
Mechanical life : 10,000,000  
operations of relay  
Accuracy Setting : ±5% of full scale or  
±50ms (whichever  
is greater)

Repeat : ±0.5% ±50ms  
(whichever is greater)

### Environmental conditions :

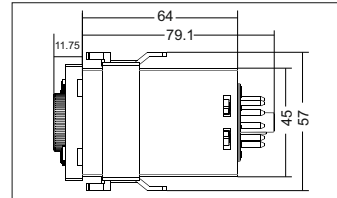
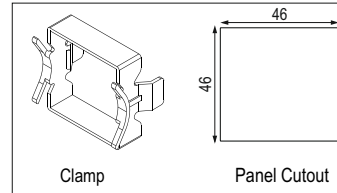
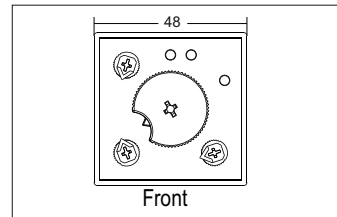
Operating : 0 to 50°C  
Storage : -20 to 75°C  
Humidity : 95%RH  
Pollution degree : 2

### Mechanical specification :

Mounting : Plug  
Weight : 100 gms

Compliance **CE**

### DIMENSIONS (All are in mm.)



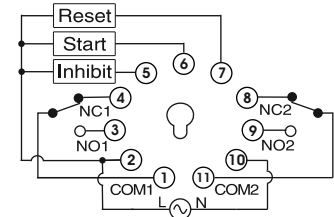
### TIME SPECIFICATION

Time range	Time unit	Time setting range
0.5	S	0.05 to 0.5 sec
1		0.1 to 1 sec
3		0.3 to 3 sec
5		0.5 to 5 sec
10		1 to 10 sec
0.5	M	0.05 to 0.5 min
1		0.1 to 1 min
3		0.3 to 3 min
5		0.5 to 5 min
10		1 to 10 min
0.5	H	0.05 to 0.5 hour
1		0.1 to 1 hour
3		0.3 to 3 hour
5		0.5 to 5 hour
10		1 to 10 hour
0.5	10H	0.5 to 5 hour
1		1 to 10 hour
3		3 to 30 hour
5		5 to 50 hour
10		10 to 100 hour
0.5	30H	1.5 to 15 hour
1		3 to 30 hour
3		9 to 90 hour
5		15 to 150 hour
10		30 to 300 hour

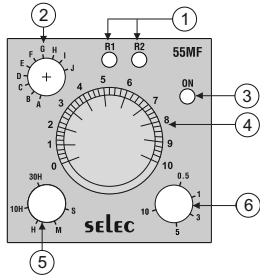
Note : Time range x Time unit = Maximum time setting range

### TERMINAL CONNECTIONS

#### 11-PIN PLUG-IN TYPE

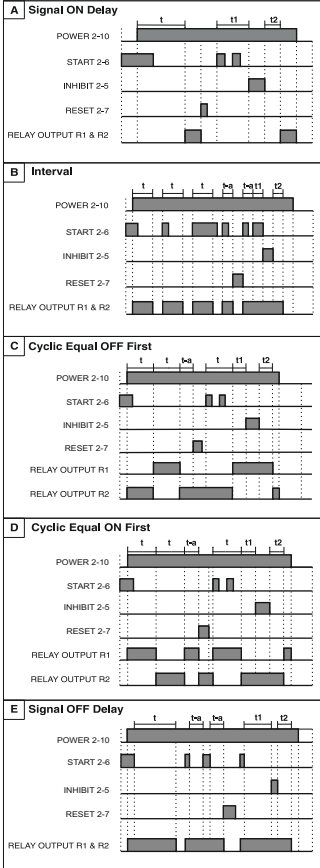


## FRONT PANEL DESCRIPTION

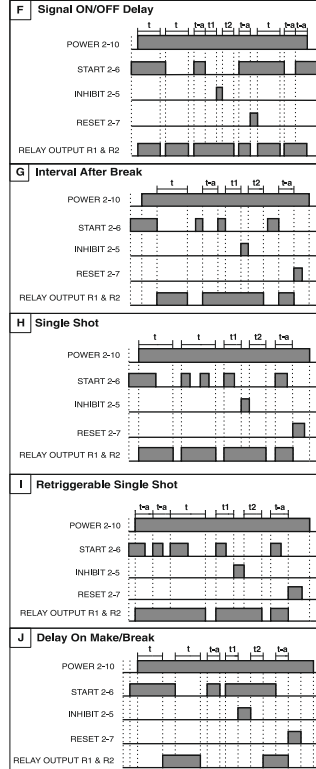


1. Red LED indicates Relay R1 & Green LED indicates Relay R2
2. Knob for Operating mode Selection
3. Red LED indicates Power ON
4. Knob for time selection  
(The marking 1 to 10 represents timing in proportion to full scale time range)
5. Knob for time range selection
6. Knob for time scale selection

## FUNCTIONS



t: Set Time,  $t=t1+t2$ ,  $t1 < t$



### Note :

1. If START terminal is closed, time cycle (t) will start.
2. If timer is cut or RESET terminal is closed, the timer will be reset.
3. If INHIBIT terminal is closed during a time-cycle, the time will be stopped until INHIBIT terminal is opened.
4. When using mode C and D, setting a very small time may not guarantee proper operation. Set time more than 100ms.

## ORDER CODE INFORMATION

Product	Supply	Certification
55MF-P11	20-240 VAC/DC 50/60Hz	CE

(Specifications are subject to change, since development is a continuous process.)

### Selec Controls Pvt. Ltd., India

Factory Address :  
EL-27/1, Electronic Zone, TTC Industrial Area,  
MDC, Mahape, Navi Mumbai - 400 710, INDIA.  
Tel. No. : +91-22-28476443 / 1882  
Fax No. : +91-22-28471733 | Toll free : 1800 227 353  
Website: www.selec.com | Email: sales@selec.com