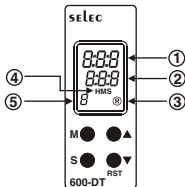




SPECIFICATIONS

- Supply Voltage** : 20 to 240V AC/DC (50/60Hz)
Time Ranges : 99:9 Sec, 999 Sec, 9:59 M:S,
 99:9M, 999 M, 9:59 H:M,
 99:9 H, 999 H
Counting Direction : Down
Accuracy : ± 0.1% of set time or ±50msec
 (Whichever is greater)
 For Y contact operation : +100msec
Repeat Accuracy : ± 0.1 %
Relay : 1 C/O (SPDT)
Reset Time : 100ms
Initiate Time : 30ms
Memory Retention : Selectable
Temperature : Operating : 0 to 50°C
 Storage : -20 to 75°C
Humidity : 95% RH.
Housing : Flame retardant engineering plastic
Weight : 70 gms

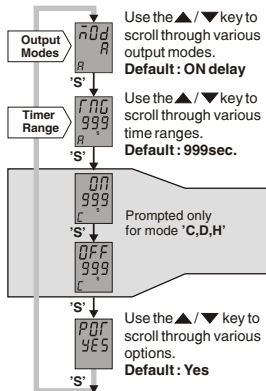
FRONT PANEL DESCRIPTION



	On line	Config.	Front Reset
①	Process time	Parameter name	
②	Set time	Parameter Options	
③	Output Status (Lit when O/P is ON)		
④	Time Range (Blink in online Mode)		
⑤	Operating Mode		

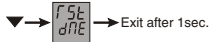
CONFIGURATION MODE

- Enter by pressing the key 'M' for 3 sec.
- Scroll the parameters by pressing the key 'S'
- Change the parameter value by pressing the ▲/▼ key.
- Exit config. mode by pressing the key 'M' for 3 sec. [All parameters are saved in memory when unit exits from config. mode.]



FRONT RESET

- Enter by pressing the ▼ key for 5sec.
 (* The unit will auto exit reset mode after 1sec.)

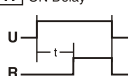


TIME SET MODE

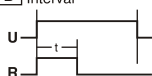
- Enter by pressing the key 'S' for 5 sec.
- Press the key 'S' to select next digit.
- If 'S' key is pressed when cursor is at the right most position [and the parameter being set is not the last one] the next parameter is displayed. And if it is the last parameter then it exits the time set mode and all parameters are stored in memory.

MODE OF OPERATION

A ON Delay



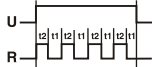
B Interval



C Asymmetrical Cyclic (OFF 1st)



D Asymmetrical Cyclic (ON 1st)



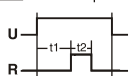
E Cycle Equal (OFF 1st)



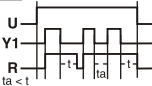
F Cycle Equal (ON 1st)



H Pulse Output



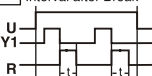
J Delay on Break



K Delay on Make/Break



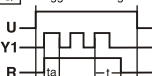
L Interval after Break



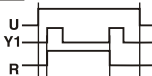
P Single Shot



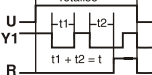
Q Retriggerable Single Shot



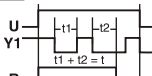
R Latching Relay



T Delay on break with Totalise



U Interval with Totalise



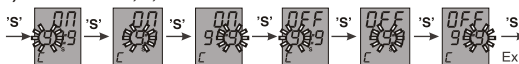
*t = set time delay
t1 = off time
t2 = on time

TIME SET MODE

1) If the mode is ON delay



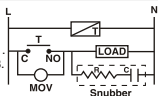
2) If the mode is C, D, H



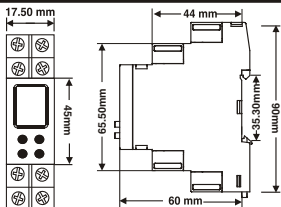
LOAD CONNECTION

NOTE :

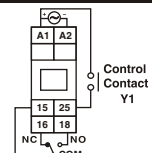
- 1) Snubber Part No.: APRC - 01.
 - 2) MOV Part No.: AP-MOV - 03.
- Use snubber to increase the life of relay.



MECHANICAL INSTALLATION



TERMINAL CONNECTION



ORDER CODE INFORMATION

Product	Supply	Certification
600DT	20 to 240V AC/DC,	 LISTED 4576 IND. CONT. EQ.
600DT-CU	50/60Hz	
Note : ■ Applicable		

(Specifications subject to change as development is a continuous process.)

Selec Controls Pvt. Ltd., India

Factory Address :

EL-27/1, Electronic Zone, TTC Industrial Area,
MIDC, Mahape, Navi Mumbai - 400 710, INDIA.

Tel. No. : +91-22-28476443 / 1882

Fax No. : +91-22-28471733 | Toll free : 1800 227 353

Website: www.selec.com | Email: sales@selec.com